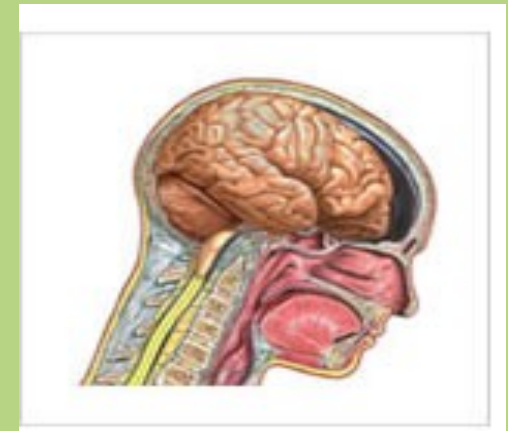


*Obtaining Special Education Services
for Students with
Traumatic Brain Injury (TBI)*



1800 N. Charles Street; Suite 400
Baltimore, Maryland 21201

410.727.6352 or 1.800.233.7201
www.mdclaw.org

Maryland Disability Law Center

*Advocating to Improve the Lives
of People with Disabilities*

January 2011

WHAT IS TRAUMATIC BRAIN INJURY?

Traumatic brain injury (TBI) is caused by a blow or jolt to the head or a penetrating head injury that disrupts the normal function of the brain. Common causes of TBI include motor vehicle and bicycle accidents, falls, sport injuries, and assault. The severity of TBI ranges from mild to severe. A mild brain injury can result in a significant disability.

Because the effect of TBI on one's life may not be readily apparent, TBI is known as the "silent epidemic" or the "invisible epidemic." The long-term effects of TBI can be serious, leading to disabilities impacting cognitive, emotional, sensory, and motor impairments. The disabilities arising from TBI can impact an individual's education, work, and relationships.

IMPACT OF TBI ON LEGAL RIGHTS

Individuals with TBI face many legal issues such as lack of appropriate supports and services in school, lack of or inadequate insurance coverage, denial of rehabilitative treatment, inadequate funding for public services, and inappropriate placement in a nursing facility or psychiatric institution.

NOTES

HOW CAN MDLC HELP?

* MDLC can address educational issues for children with TBI, including:

- Breaking down the systemic barriers that prevent more students from being educated appropriately in their neighborhood schools;
- Advocating for students who need appropriate assistive technology services and devices in order to receive a free and appropriate public education or appropriate early intervention services;
- Advocating for students who are inappropriately disciplined by school staff, including suspension, expulsion, restraint, and seclusion; and
- Advocating for students with disabilities involved in the juvenile justice system to ensure that they receive appropriate special education services.

* MDLC can address Medicaid issues for children and adults with TBI, including:

- Handling cases for individuals on Maryland Medical Assistance or Waiver Programs who have been denied healthcare or covered services, or where such services have been delayed.

OUR SERVICES INCLUDE:

- Outreach and trainings on issues such as special education and covered Medicaid services for families and professionals about legal rights and processes;
- Technical assistance;
- Information and referral services;
- Short-term assistance; and
- Individual case representation.

For questions or requests related to special education services for students with TBI, please contact our Special Education Intake Department at (410) 727-6352, ext. 0.

For questions or requests relating to all other legal issues, contact the General Intake Department at (410) 727-6352, ext. 0.

Please call from 10 A.M. to 12 P.M., Monday through Friday.